

# Assembly Instructions

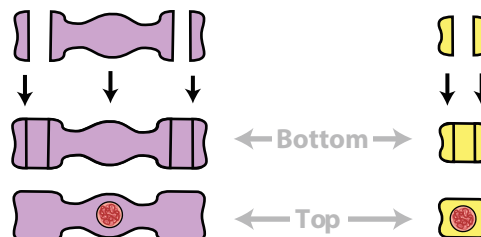
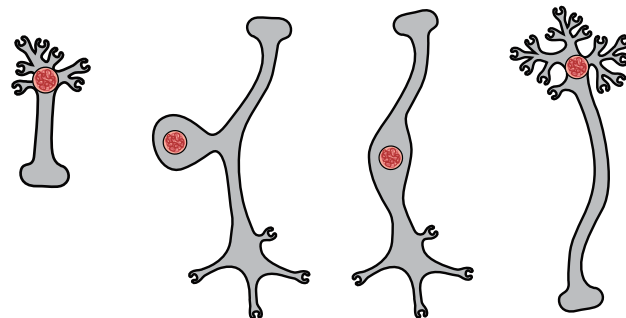
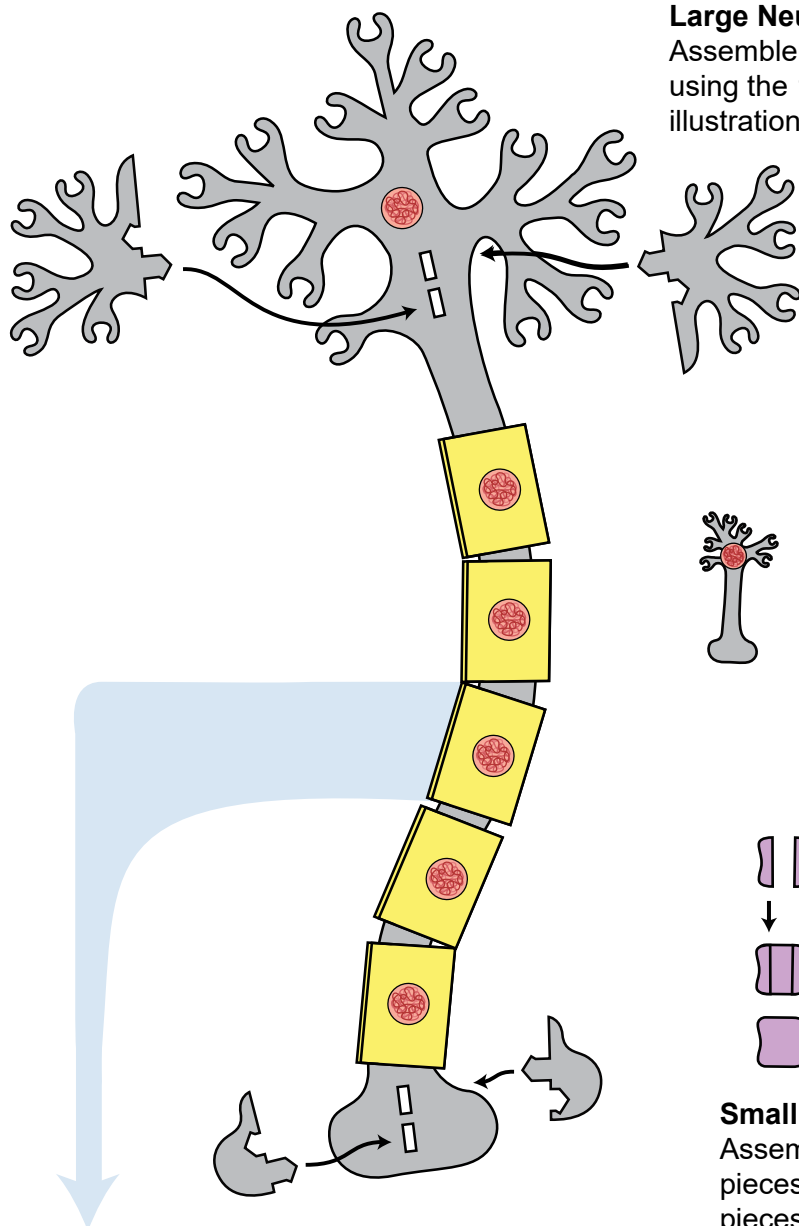
Please allot approximately 20 minutes to assemble your first Neuron Modeling Kit® and 15 minutes for each additional kit (if you have more than one). Save the excess gray foam so students can later model additional pieces such as oligodendrocytes or astrocytes.

## Large Neuron Models

Assemble each of your two large neuron models using the 10 gray foam pieces, as shown in the illustration to the left.

## Nucleus Sticker Application

Affix one red nucleus sticker to each of the 2 large and 8 small neuron models, and to the center of all large and small Schwann cells and oligodendrocytes (after assembling them), as shown in the illustrations.



## Small Schwann Cells and Oligodendrocytes

Assemble the small Schwann cells (yellow foam pieces) and oligodendrocytes (purple foam pieces) as shown in the illustration above.

## Large Schwann Cells

Wrap 5 of the yellow Velcro® pieces to each of the 2 neuron models (10 total), as shown in the illustrations.